



# Gliders

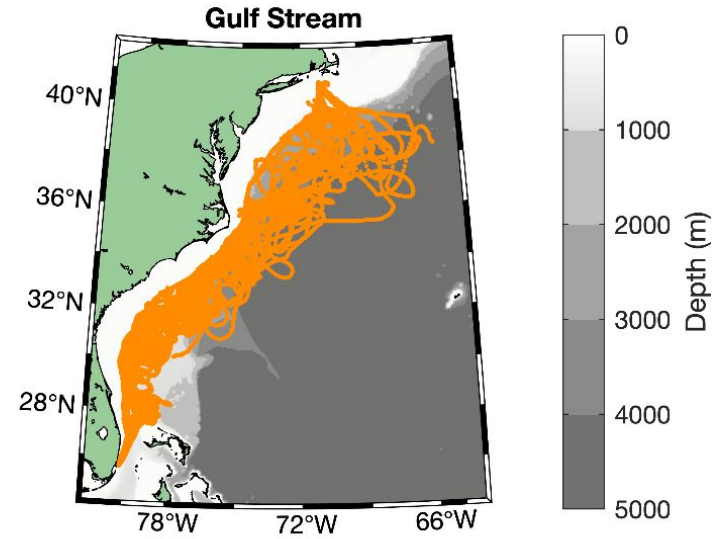
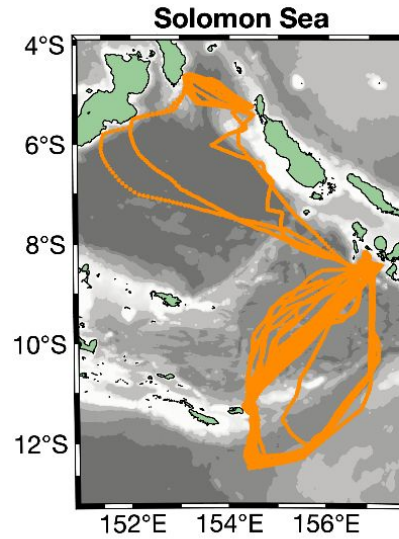
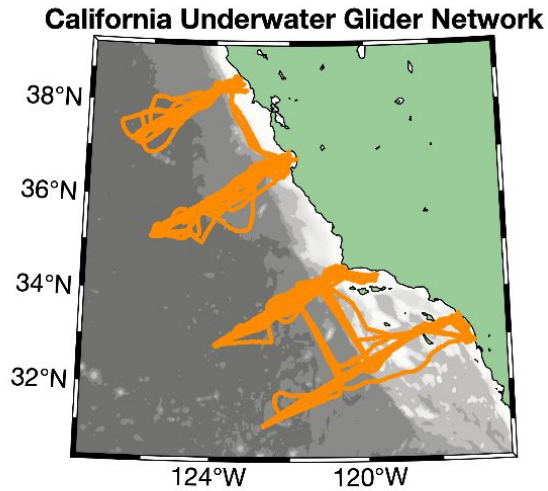
Emily A. Smith, GOMO Program Manager



# Project Overview



- Three main projects:
  - California Current
  - Gulf Stream
  - Solomon Sea



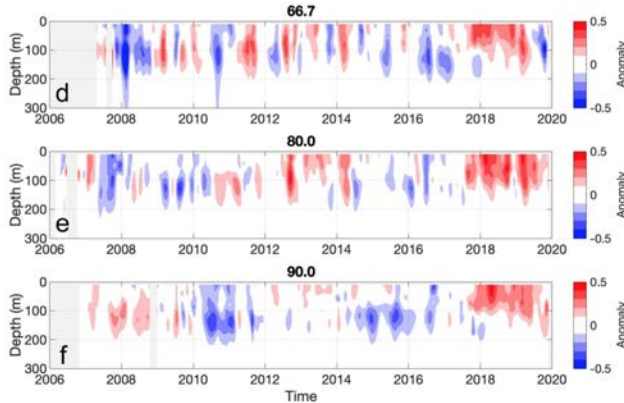
# GOMO link

- GOMO has supported this work:
  - Since 2004, with the newest addition of the Gulf Stream work during the hurricane season since 2015
    - Support for field work as well as data sharing (near-real time and post-processed)
  - Encouraging growth in the glider community
  - Providing baseline support (sustained observing) to leverage research (improvements in sensors, development of SPRAY 2)



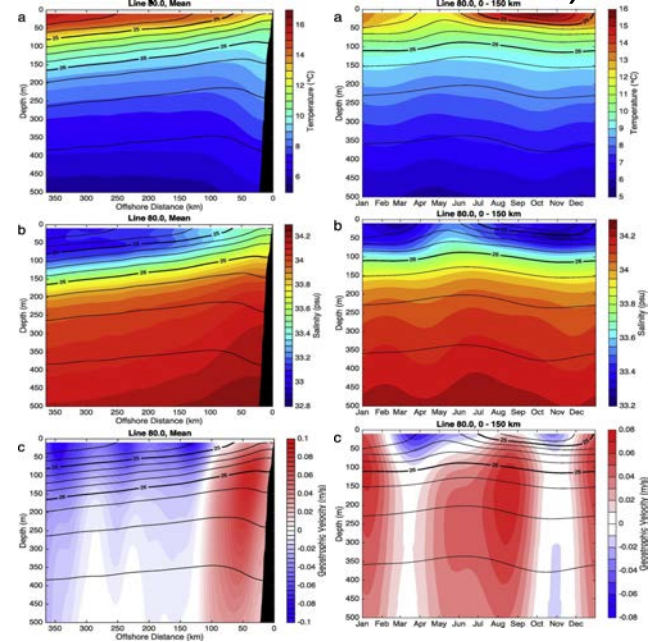
# Achievements and Impacts: California Current

Characterizing extreme events off California (Ren and Rudnick 2021)



Multi-year  
Salinity  
Anomaly  
(Ren & Rudnick  
2021)

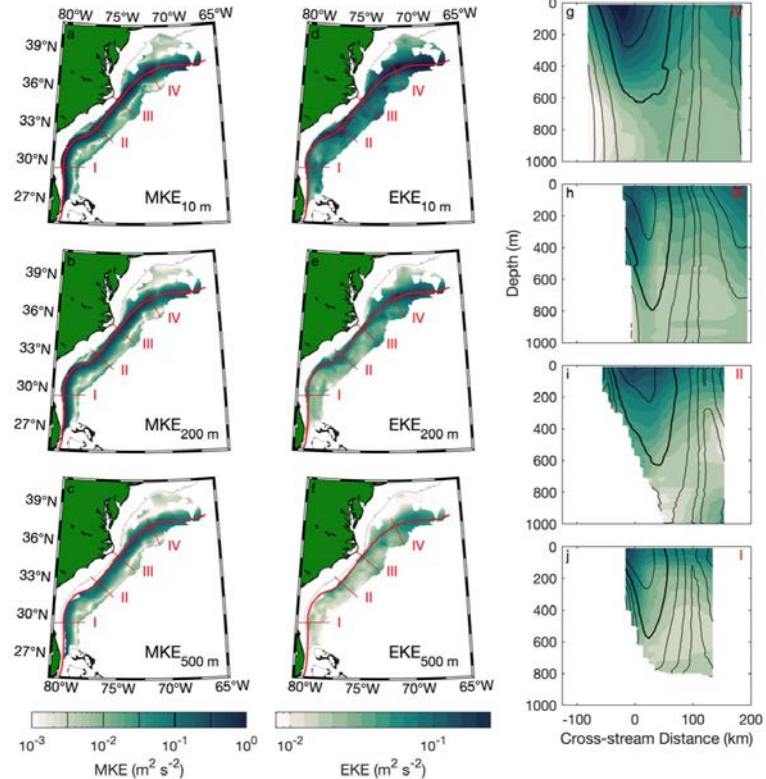
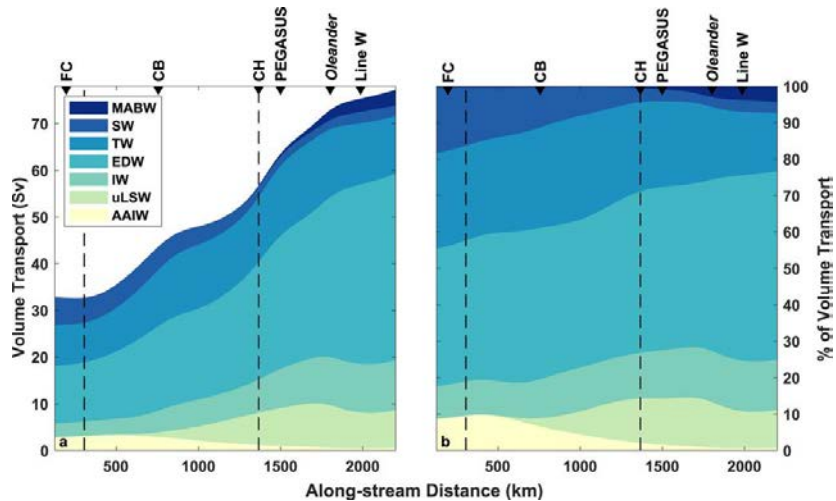
CUGN Climatology  
(Rudnick et al. 2017)



# Achievements and Impacts: Gulf Stream

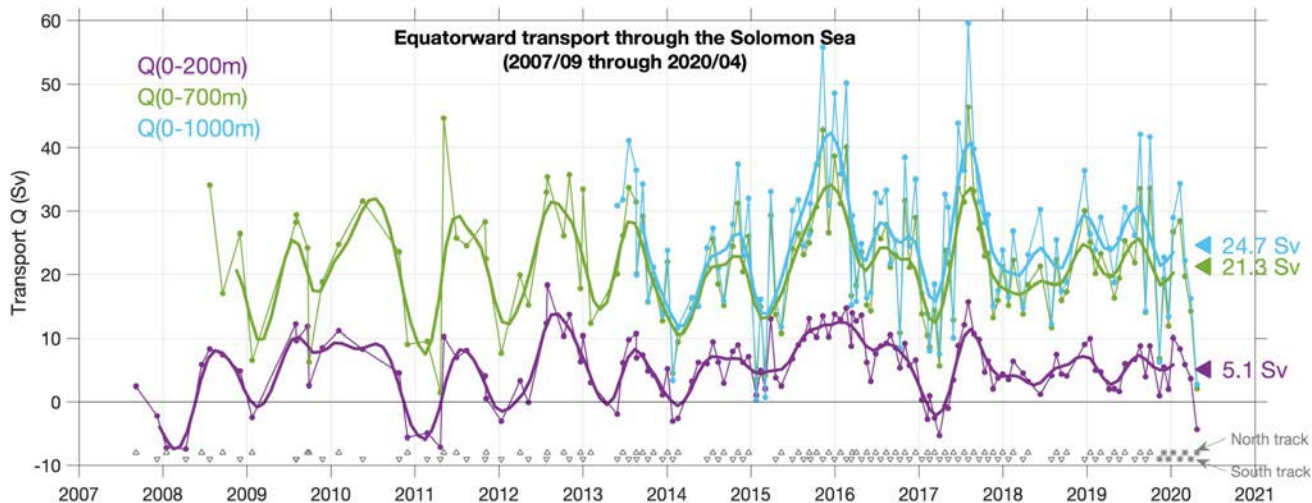
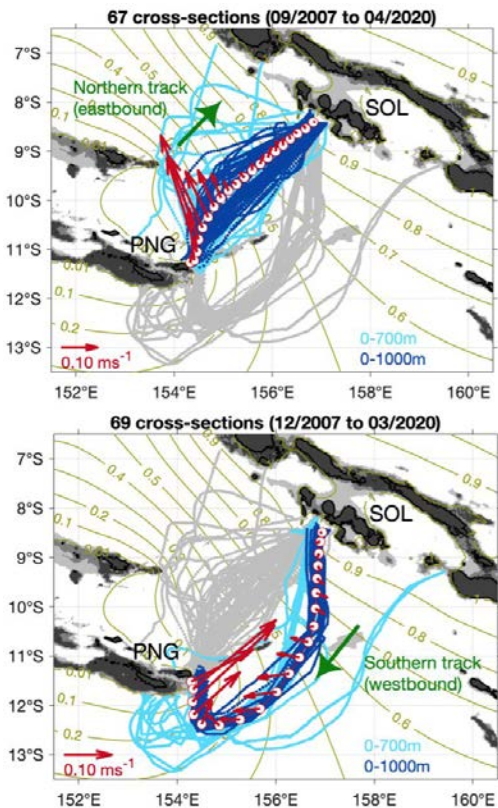
## 3D Gulf Stream Kinetic Energy (Todd 2021)

## Gulf Stream Transport by Water Class (Heiderich & Todd 2020)



# Achievements and Impacts: Solomon Sea

Time-series of equatorward transport through Solomon Sea  
(Kessler et al. 2019)



## Impact of the glider program (last 5 years)

- Model for sustained glider-based observing in eastern and western boundary currents
- 3 Ph.D. graduates and 1 M.S. graduate
- >25 peer reviewed publications using these observations



# Future plans and opportunities

- Next steps and future plans (next 5 years)
  - Work on a transition plan for the California Current gliders
  - Develop a more sustainable plan for the Gulf Stream activities
  - Invest in product development for BGC variables from coast to open ocean with integrating glider and Argo data
- How will these future plans advance the ocean observing enterprising?
  - The Gulf Stream is a major contributor to sea level rise on the east coast and an indicator for intensity of hurricanes.
  - A BGC product in the California Current would help with fisheries management

